

Configuring Smart FTP 2.0 to work with jFTPd server.

Step 1.

Click on the File menu, select New Remote Browser:
Type in your informations.

New Remote Browser

General

Paste URL

Protocol: FTP over SSL Explicit

Host: ftp.example.com Port: 21

Path:

Login Type: Username & Password

Username: A55555

Password: ●●●●

Properties

Add to Favorites...

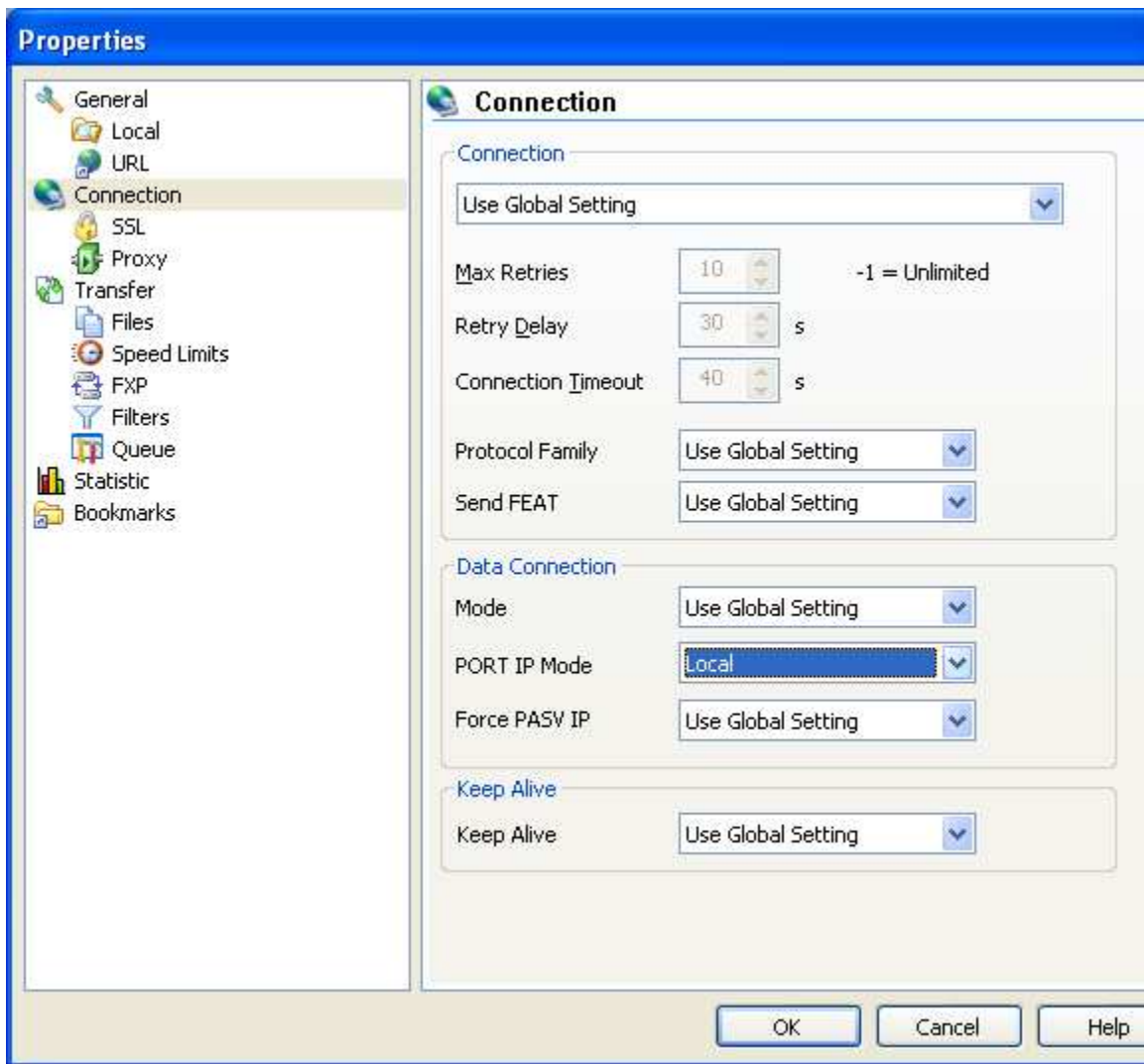
Name: ftp.example.com - A55555 Auto

Favorites -> Quick Connect

OK Cancel

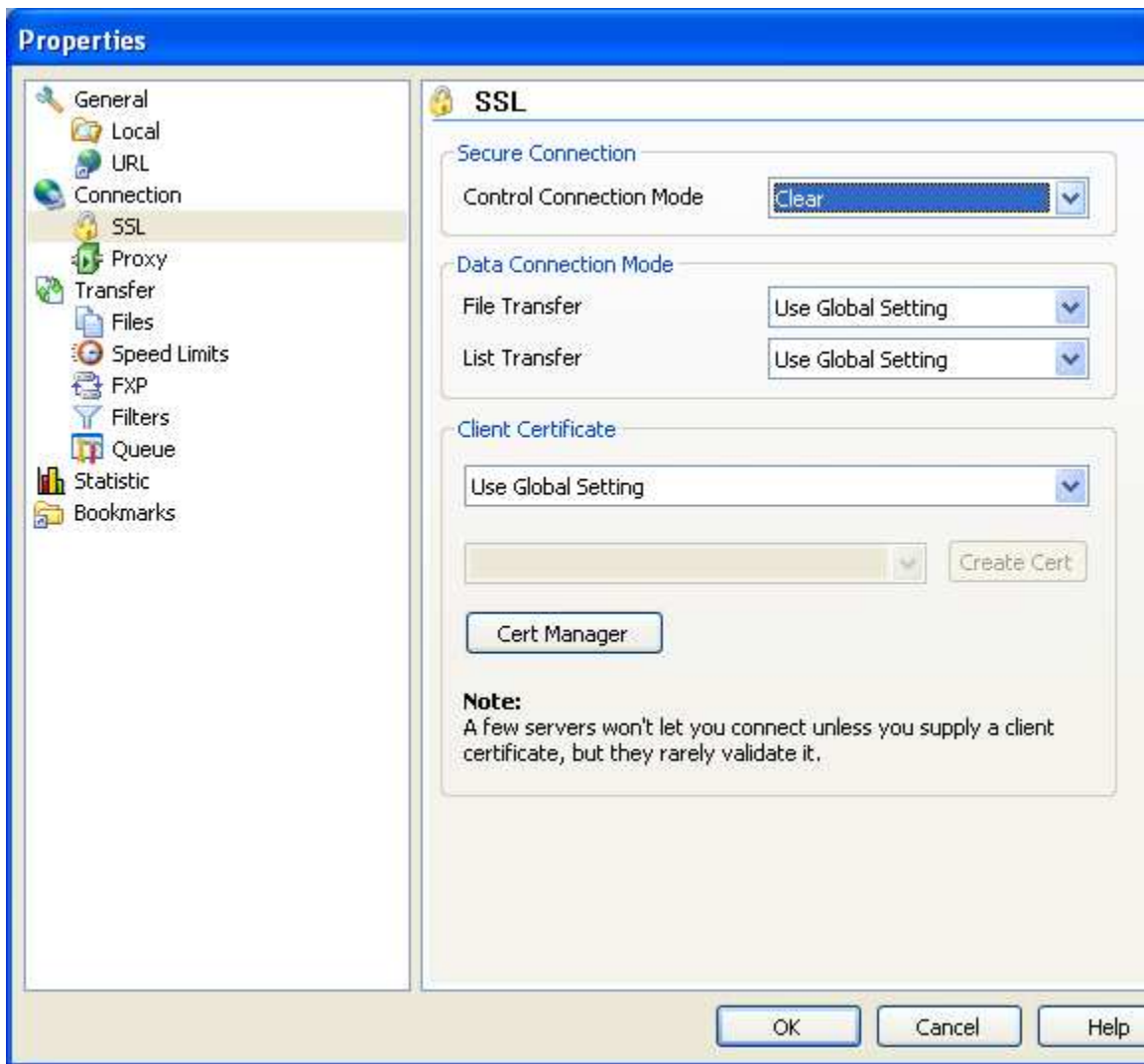
Step 2.

Click on Properties, select the Connection tab. Make sure the PORT IP Mode is "Local"



Step 3.

On the same Properties window, go to SSL tab - make sure the Control Connection Mode is Clear.



Step 4.

Press OK and dismiss the New Remote Browser window again with OK.

You should be connected after this.